

Fi-Block™

Fire Stop Penetration System

UP TO
4 HOURS
RESISTANCE

FIRE RESISTANT BARRIER FOR
INSULATED PIPE WORK PENETRATION
THROUGH FIRE RATED WALLS AND FLOORS



Thin Sheet

Expansion to create fire resistant char

- AS 1530-4
- AS 4072-1
- BS 476-20



Fi-Block is a trademark of Sekisui Chemical Ltd.

SEKISUI

FOAM
INTERNATIONAL
Global Foam Solutions

Sekisui Pilon Pty Ltd.
1-5 Parraweena Rd, Taren Point NSW 2229 Australia
PO BOX 2898, Taren Point NSW 2229 Australia
Web Address: www.pilon.com.au
Tel: +61 2 9525 9880
Fax: +61 2 9525 8004

Thai Sekisui Foam Company Ltd.
Amata Nakorn Industrial Estate, 700/329 Moo 6,
Tumbol Donhua-loh, Amphur Muang Chonburi 20000
Thailand
Tel: +66 3821 3219 ~ 26
Fax: +66 3821 3281

PRODUCT DESCRIPTION

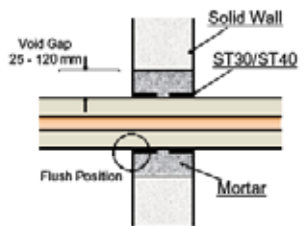
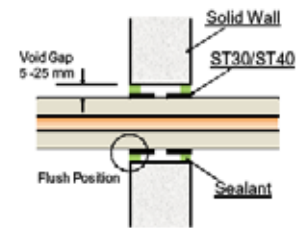
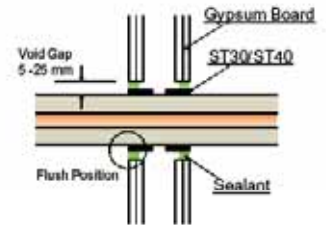
Fi-Block is a high performance intumescent laminate that is specifically designed and approved for use with insulation tube around metal pipes.

Exposed to fire conditions, Fi-Block will prevent the passage of flames and hot gases penetrating through fire rated floors and walls providing a fire resistant barrier for up to 4 hours.

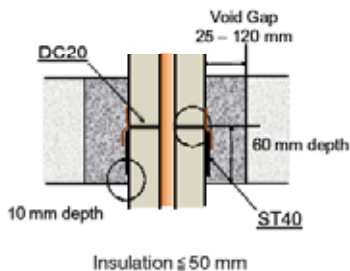
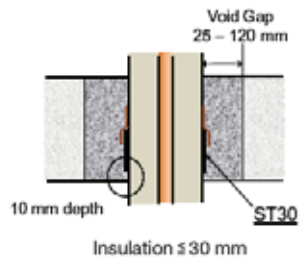
FEATURES & BENEFITS

- No metal sleeves are required
- Easily installed over in-situ piping by one person
- Easily installed as the wall is being built
- Suitable for insulation tubes such as PE, PE/foil (Thermobreak™) and Elastomeric foams (NBR/PVC & EPDM rubber)
- Thin 4mm and 5mm wraps
- Economical - delivers fire protection at the right price
- Engineered for rapid expansion when exposed to fire
- Provides a fire resistant barrier for up to 4 hours
- Intumescent material responds to flames or heat by quickly sealing the pathway and preventing the passage of flames and smoke
- Innovative fire-stop design for use with up to 50mm thick insulation tube
- Environmentally safe - Halogen free and no fibres
- 25 year warranty on Fi-Block performance
- Fully certified and approved to international standards: AS 1530-4, AS 4072-1 and BS 476-20

WALL SECTIONS:



FLOOR SECTIONS:



PERFORMANCE MATRIX

Condition	Supporting Materials	Dry Wall		Solid Wall		Concrete Floor	
	Insulation wall thickness (mm)	≤ 30 mm	≤ 40 mm	≤ 30 mm	50 mm	≤ 30 mm	≤ 50 mm
FRL Performance (Fire Rating of Integrity)		-/120/- 2.0 Hours	-/90/- 1.5 Hours	-/120/- 2.0 Hours	-/120/- 2.0 Hours	-/120/- 2.0 Hours	-/120/- 2.0 Hours
Products	ST30	2 units		2 units		1 unit	
	ST40		2 units		2 units		1 unit
	DC20						1 disk

1) FRL -/180/- (3.0 Hours) when using 13 mm metal pipe and the insulation tube up to 30 mm thick.
2) FRL -/240/- (4.0 Hours) when using 13 mm metal pipe and the insulation tube up to 50 mm thick.

TYPES

- ST30- Intumescent laminate for use with insulation wall thicknesses 13mm - 30mm.
- ST40- Intumescent laminate for use with insulation wall thicknesses > 30mm - 50mm.
- DC20- Intumescent disk for use in floor section with insulation wall thicknesses > 30mm - 50mm.

DISTRIBUTORS